

Highland Jt. School District
Pandemic Operations Plan

Category 1—No Community Transmission

Category 2—Minimal to moderate Community Transmission

Category 3—Substantial Community Transmission

Category 1

PPE Strategies

- Optional Masks and/or Face Shields.
- Any employee/student or visitor exhibiting any of the following symptoms must wear a mask until leaving campus. It is expected that parents will pick up their children promptly if any of these symptoms are exhibited.
 - 100.4 Fever or greater
 - Nausea or vomiting
 - Diarrhea
- If an employee/student is exhibiting 2 or more of the following symptoms (not including the above symptoms) they must wear a mask until leaving campus. It is expected that students will be picked up promptly.
 - Loss of taste/smell
 - Cough
 - Difficulty breathing
 - Headache
 - Sore throat
 - Congestions or runny nose
- Establish and maintain hand hygiene stations throughout the building.

Classroom

- Maintain social distancing when available:
 - Desks will be arranged as far away from each other as possible
 - No Group work; unless students have on masks
 - Table separators for classrooms with tables
- Secondary teachers will sanitize desks, pencil sharpeners, high touched surfaces between classes.
- Elementary teachers will sanitize desks, pencil sharpeners, high touched surfaces throughout the day.
- All teachers will sanitize desk and high touched surfaces in their classrooms at the end of the day.
- Doors to classrooms will remain open during the duration of the day to decrease door handles being touched.
- Integrate good hygiene practices into instruction and classroom expectations.
- When possible, windows will be open

- Limit the use of shared materials and spaces:
 - Students belongings separated
 - Avoid sharing supplies, electronic devices, books, etc.
- Avoid outside food in the classroom.
- Students and staff will use personal water bottles and only use the water bottle filling stations, not the drinking fountains.

Cafeteria

- Use of hand sanitizer at the start of the serving line.
- Staggered class dismissals, maintain 6 feet between classes.
- Separate elementary lunches; students will sit with same grade level peers; 6 feet separate from the next other grade levels; no student will sit directly across from another student.
- Secondary lunch; students sit with same grade level peers; 6 feet separate from other grade levels; no person sits directly across from each other.
- No salad bar.

Visitors

- No irregular/unscheduled visitors.
- Limit visitors to parents, by appointment, and critically important visitors on campus.
- All visitors must wear a mask before entering the building.
- Parents may not go past the office:
 - All lunches, school work, etc. must be dropped off at the office

Gatherings

- Discourage gatherings for areas such as the bus lane, restrooms, recess, hallways, lunch, before and after school.
- No field trips, assemblies or other large gatherings if physical distancing cannot be achieved. Field trips will not be allowed if there is community spread where the field trip is to take place.
- Limit mixing groups.
- Avoid personal contact such as hugs, high fives, etc.
- Within the building if social distancing cannot be maintained then masks will be worn (such as between passing periods, before school when congregating out in the hall)

Busing

- Students and drivers will use hand sanitizer when they enter the bus.
- Students will sit one to a seat (except siblings or those living in the same household will sit together).
- When possible an empty seat between passengers
- Busses will be disinfected after each use.

Recess

- If outdoor recess is not feasible, indoor recess will occur in the classrooms.

Confirmed Case in School, Regardless of Community Transmission

- If there is a confirmed case in the school, it might be necessary to initiate a short-term dismissal in order for local health officials and school administration to gain a better understanding of the COVID-19 situation impacting the school. This allows the local health officials to help the school determine appropriate next steps, including whether an extended dismissal duration is needed to stop or slow further spread of COVID-19.
- Local health officials' recommendations for the scope and duration of school dismissals will be made on a case-by-case basis.
- During school dismissals all extracurricular group activities, school-based afterschool programs, practices, etc. will also be canceled.
- During school dismissals, school facilities will be disinfected according to CDC and local public health official's guidance.

Category 2

All Category 1 operations are in place, plus:

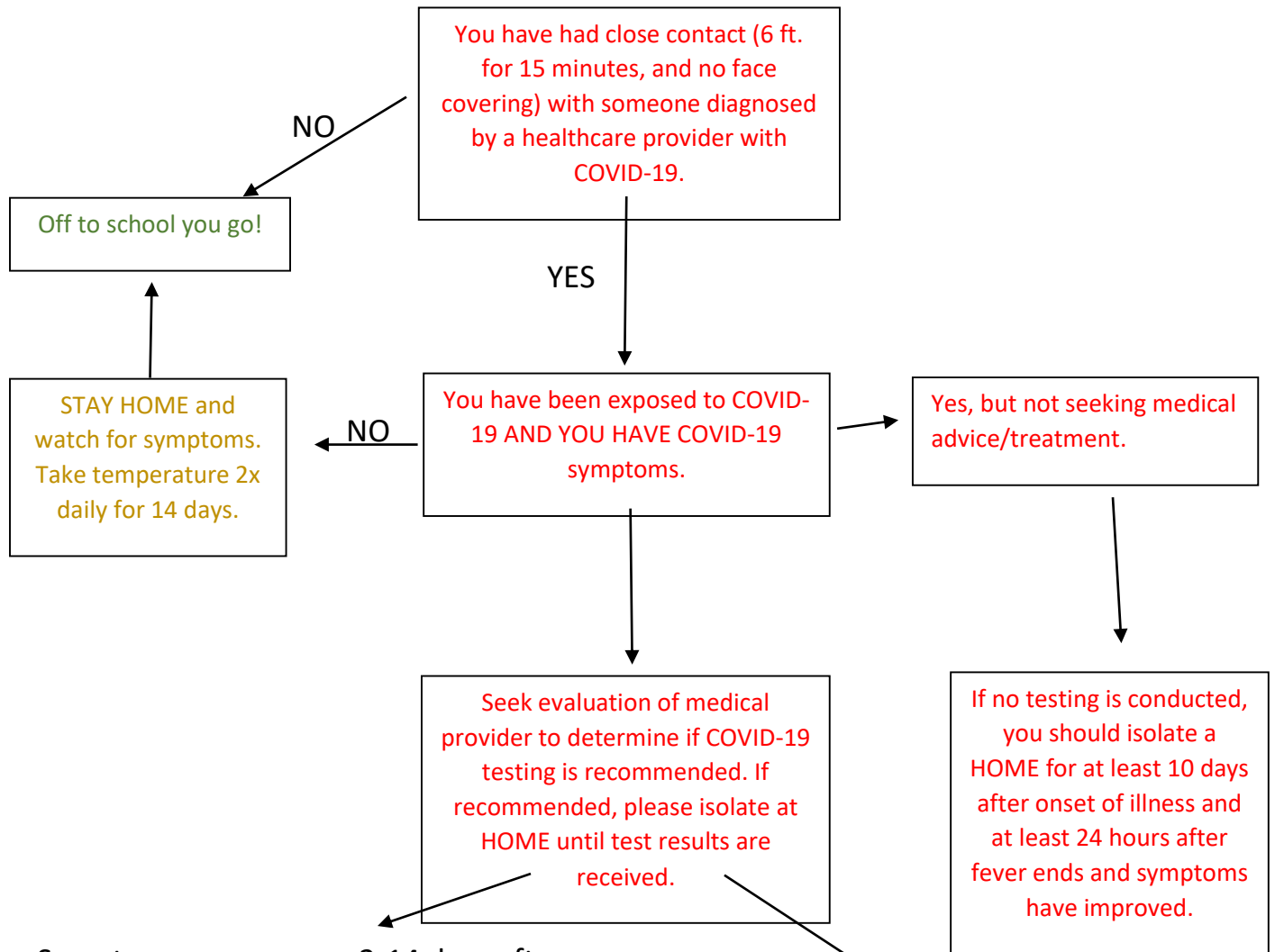
- Coordinate with the local public health district.
- When social distancing of 6 feet or more cannot be maintained masks will be worn. Masks shall be worn by students. Staff may choose to wear masks or face shields. Students that cannot wear a mask will be physically distanced from other students.
- Students riding the bus must wear a face mask.
- Conduct daily health screenings of employees and students for COVID-19 as they enter the facility. Isolate and send home students and staff that show symptoms. Parents will be expected to promptly pick their child up from school. Siblings will also be picked up at that time.
- Encourage parents to screen students every morning before attending school. Parents do not send students to school that exhibit symptoms.
- All visitors will be screened before entering the building and must wear a mask
- Lunch will be closed. Students remain on campus during lunch. Secondary will be separated by class levels.
- Recess: Each class will have a designated area for play; there will be no co-mingling of classes.
- Field trips, assemblies, etc. will be canceled.
- No loitering in the hallways:
 - Elementary students will enter the building using the outside doors directly into their classrooms.

- Secondary students will be expected to go directly to their 1st period classroom after going to their lockers to get their materials
- Students and employees that have symptoms of COVID-19, the Decision Tree for Symptomatic People is followed.

Category 3

School will go to distance learning mode.

INDIVIDUAL EXPOSURE TO SOMEONE DIAGNOSED WITH COVID-19



Symptoms may appear 2-14 days after exposure to the virus and include:

- Fever
- Shortness of breath or difficulty breathing
- Cough
- Chills, could include repeated shaking
- Muscle pain
- Headache
- Sore throat
- New loss of taste or smell

TEST POSITIVE

If test result is POSITIVE, continue to isolate at HOME for 14 days. Public Health will contact you. You may return to school if symptoms have improved and you have no fever for 24 hours.